

Product Information



Haze Control 4000 Scattered Light Turbidity Analyzers

Haze Control DT9011 Laboratory Turbidity Analyzer



english
deutsch
portuguese
中文
français



For over 30 years, optek has focused on measuring process liquids through their interaction with light in facilities all over the world. Although global, optek remains a family owned company with a team of more than 100 qualified, customer-driven professionals.

Our confidence is born from experience. With the expertise of more than 30,000 installations worldwide, our value to the customer resides in providing a superior product that pays back. High quality materials withstand the toughest process conditions including aggressive media, high temperature, and

high pressure applications. Cleanability is ensured using high quality wetted materials, superior design, as well as sapphire optical windows.

As a global partner to various industries, optek offers the most advanced technologies including superior signal amplification, inline calibration support, PROFIBUS® PA, FOUNDATION™ Fieldbus and multilingual user interfaces for easy onsite operations.

Our support ensures long term satisfaction with programs such as “Speed-Parts” and “SwapRepair” to provide our

customers sustainable operations and minimized downtime at the lowest cost of ownership.

Conformity to international (ISO 9001), industry-specific (FM/ATEX approval) or company standards is easily achieved with optek. Wherever process composition is controlled, the name optek has become synonymous with world-class products and support.

**Optimize your process
with optek inline control.**



Content

HC4000 – photometric converter	03
HC4000 – photometric converter (configurations)	04
HC4000 - accessories	06
HC4000 - technical data	07
Turbidity sensor DTF16	08
Probe sensors AS16-N/AS16-F	10
Laboratory turbidimeter DT9011	12
Applications	14
Haze control physics	15
optek - worldwide contact	16

See our various product and application brochures for further details



The Haze Control 4000 is a powerful, microprocessor based converter.

The advanced modular design has been specifically engineered for high precision haze (turbidity) measurements. The menu based software is easy to use and configure and available in German, English, French, Dutch, Spanish, Russian and Portuguese. The software includes adjustable signal damping, 16 linearization tables and advanced calculation capabilities. An integrated data logger captures vital process information for quality assurance and plant control records. This data is easily transferred to a PC via a RS232 port.

HC 4000 – Photometric converter

The Haze Control 4000 photometric converter is designed to operate with the optek DTF16 (11°/90° scattered light sensor) and additionally with AF16 or AS16, visible (VIS) or near-infrared (NIR) based sensors.

The graphic display can show absorbance, turbidity and concentration in real-time and in any unit of measure such as EBC, FTU, ppm (DE), NTU, ASBC and Helms.

These measurements may also be displayed as text, bar graphs or trend values. A factory zero point is implemented for the scattered light sensors.

A secondary user zero for additional offset is included, as well as a slope and shift adjustment. This manual adjustment can be used to compensate for long term process related disturbances.

Haze Control Units and Measuring Ranges Haze Control DTF16

Unit	EBC Correlation	90° Side Scatter	11° Forward Scatter	0° Absorption
EBC	1	0 - 25	0 - 25	0 - 500
FTU	4 = 1 EBC	0 - 100	0 - 100	0 - 2,000
NTU	4 = 1 EBC	0 - 100	—	—
ASBC-FTU	69 = 1 EBC	0 - 1,725	—	0 - 34,500
Helms	40 = 1 EBC	0 - 1,000	—	—
ppm (DE)	6.4 ≈ 1 EBC*	—	0 - 200	—

* non linear correlation

- EBC** = European Brewery Convention
- FTU** = Formazin Turbidity Units
- NTU** = Nephelometric Turbidity Units
- ASBC** = American Society of Brewing Chemists
- Helms** = Turbidity Unit
- ppm (DE)** = Parts per Million (Diatomaceous Earth)

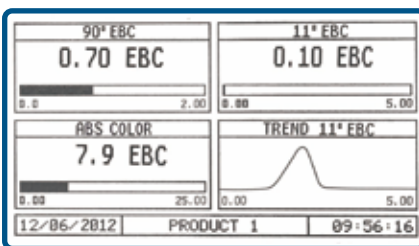
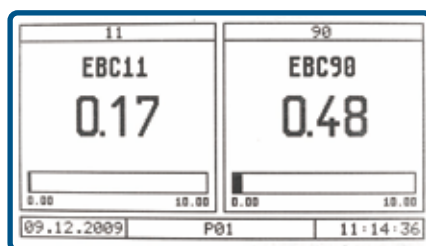
04 | HC4000 - Photometric Converter



The Haze Control 4000 is available in various configurations to meet the exact needs of your process.

- Multiple photometric sensors
- Multiple parameter sets
- Multiple linearization tables
- Data logger
- Factory zero for scattered light sensors
- Remote control

Sensor		Converter							
1	2	4301	4321	4351	4361	4402	4422	4452	4462
DTF16	—	✓	✓	✓	✓	✓	✓	✓	✓
DTF16	AS16 or AF16	—	—	—	—	✓	✓	✓	✓



Display Modes

- 1 - 4 simultaneously displayed values (configurable)
- Numeric with bar graph and alarm setting
- Trendline

Software Tools

- 8 parameter sets (incl. range, alarm, display, etc.)
- 16 linearization tables (max. 11 points)
- 8 offset and slope sets
- Auto zero (local or remotely activated)
- Factory zero setting (scattered light sensors only)
- Password protection (3 levels and none)
- Memory (non-volatile) retains all configurations and logged data

Remote Control

- Parameter set (e.g. range)
- Zero
- Hold



HC4000 Configuration		4301	4321	4351	4361	4402	4422	4452	4462
Detector inputs (optek)	①	3	3	3	3	4	4	4	4
Power supply 115/230 or 24 V	②	✓	✓	✓	✓	✓	✓	✓	✓
Remote-IN: (Zero, Range, Hold)	③	—	✓	—	—	—	✓	—	—
Relay-outputs	④	3	3	3	3	3	3	3	3
Failsafe-relay (active)	④	✓	✓	✓	✓	✓	✓	✓	✓
Lamp outputs (optek)	⑤	1	1	1	1	2	2	2	2
mA-outputs (0/4 - 20 mA)	⑥	2	2	2	2	4	4	4	4
mA-inputs (4 -20 mA)	⑦	—	2	—	—	—	2	—	—
Profibus® PA	⑧	—	—	✓	—	—	—	✓	—
FOUNDATION™ Fieldbus	⑧	—	—	—	✓	—	—	—	✓

PROFIBUS® PA

- Fulfills application profile for process automation (version 3.01)
- Cyclic:
 - 4 Measuring outputs, each with 4x limit and status
 - Status of all 4 relays
 - 2 Measuring inputs
- Acyclic:
 - Zero, Hold, Product change, Monitors, Error codes
- GSD, EDD file and DTM for FDT interface provided
- Interface to profibus DP segment using a segment coupler

FOUNDATION™ Fieldbus

- Fulfills FOUNDATION™ Fieldbus H1 (IEC 61158-2)
- Registered function blocks: 1xRB, 8xAI(s), 4xDI(s), 2xAO(s)
- H1 Profile class: 31P, 32L
- H1 Device class: basic, link master
- 4 Measuring outputs with status
- 4 Relays with status
- 2 Measuring inputs
- With optek specific resource block parameter:
 - Zero, Hold, Product change
- Device description (DD) and capabilities files provided

06 | HC4000 - Accessories

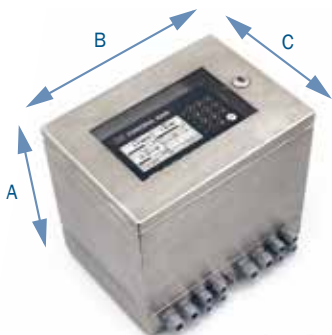
The PC-Transfer software allows communication between converter and PC via a RS-232 port. Documentation and set-up including identical set-up of multiple converters are made simple.

Converter to PC:

- Parameter set
- Trend data online
- Data logger

PC to converter:

- Parameter set
- Software update



S19-42

Wall mount housing (IP65)
Material: stainless steel 1.4301 / SS 304
A: 301 mm (11.9 in.)
B: 340 mm (13.4 in.)
C: 237 mm (9.4 in.)



B19-42

Wall mount housing (IP66)
Material: plastic (ABS)
A: 287 mm (11.3 in.)
B: 353 mm (13.9 in.)
C: 147 mm (5.8 in.)
D: 237 mm (9.4 in.)



T19-42

Table top housing
Material: aluminum
A: 150 mm (5.9 in.)
B: 260 mm (10.2 in.)
C: 320 mm (12.6 in.)



B-ADS / B-ADS-WS Air Drying System

Condensation can affect any optical instrument operating in an environment where process piping is colder than ambient air.

For this reason optek sensors are equipped with air purge connections. If no dry and dust free air is available, the B-ADS / B-ADS-WS (Beko Air Drying System) can be used to condition supplied air.

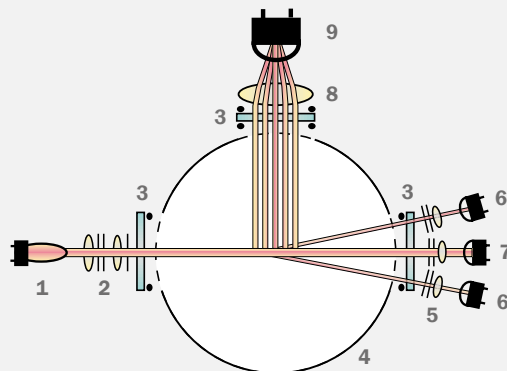
Front-Kit

Front panel mounting (IP65 - front only)
(not shown)

Technical Data	HC4000
Housing	19"-version for mounting in control cabinets 3 U / 42 HP - dimensions: W 213.0 mm (8.39 in.) H 128.4 mm (5.06 in.) D 230.0 mm (9.05 in.) - material: stainless steel / polyester / silicone / glass / diverse plastics - protection: front IP40 / rear IP20 (mains supply secured against accidental touching)
Display	LCD graphic display black on white (240 x 128 pixel), LED background illuminated
Operation	18-button keyboard
System clock	accuracy approx. 1 minute/month (battery life approx. 15 years)
LED	1 LED (green): power on 1 LED (red-flashing): system failure 3 LEDs (yellow): alarm I, II, III
Data logger	4 parallel measuring values (ring buffer with approx. 25,000 data points x 4) (interval: 1/second - 1/hour)
Sensor-inputs	3 or 4 for optek photometric sensors
mA-inputs	optional: 2 x 4 - 20 mA (functionally galvanically isolated) - accuracy: < 0.5% - resolution: < 0.05% - load: < 200 Ohm
Remote-inputs	optional: 7 x 24 V (19 ... 29 V DC), typically 6.0 mA for remote range setting, remote zero, remote hold
Profibus® PA interface	optional: Profibus® PA profile, version 3.01, amendment 2
FOUNDATION™ Fieldbus interface	optional: FOUNDATION™ Fieldbus H1 (IEC 61158-2)
Sensor lamp-outputs	1 or 2 lamp supply for optek photometric sensors 4.5 ... 8.5 V DC
mA-outputs	2 or 4 x 0/4 - 20 mA (NAMUR) (functionally galvanically isolated) - accuracy: < 0.5% - resolution: < 0.05% - load: < 600 Ohm
Relay-outputs	3 independent software-configurable relay contacts 0 - 50 V AC, 0 - 75 V DC, 0 - 2 A - for alarm or status feedback - initiation delay configurable: 0 - 999 sec.
Failsafe-output	1 SPDT contact to alarm in case of lamp or system failure (active) 0 - 50 V AC, 0 - 75 V DC, 0 - 2 A
Serial communication	RS232 bi-directional interface on front panel (with software package optek PC-transfer) - upload and download of configuration, download of data logger content
Cable lengths (sensor)	2, 3, 5, 10, 15, 20, 30 ... 100 m (7, 10, 16, 33, 49, 66, 98 ... 328 ft) cable length > 100 m on request up to 1,000 m (3,280 ft) sensors: AS16: max: 50 m
Power supply	115 / 230 V AC, selectable (93.5 - 132 / 187 - 264 V AC, 47 - 64 Hz) or 24 V AC / DC (AC: 20.4 - 26.4 V AC, 47 - 64 Hz; DC: 20.4 - 28.8 V DC) - power consumption: < 50 VA
Ambient conditions	temperature during operation (no direct sunlight): - converter: -10 - 55 °C (14 - 131 °F) - with optional stainless steel housing S19-42 (IP65): -20 - 45 °C (-4 - 113 °F) - with optional plastic housing B19-42 (IP66): -10 - 40 °C (14 - 104 °F) temperature during transport (no direct sunlight): -20 - 70 °C (-4 - 158 °F)
Software languages	English, German, French, Spanish, Dutch, Portuguese, Russian

Data given are subject to changes without prior notice.

08 | Turbidity Sensor DTF16



Model DTF16 Dual Channel Scattered Light (11° and 90°)

- 1 Lamp module
- 2 Optics module
- 3 Windows
- 4 Sensor body
- 5 Focusing optics
- 6 Eight 11° detectors
- 7 Detector 0° (Abs.)
- 8 Optics module 90°
- 9 Detector 90°

DTF16 Haze Control Process Turbidimeter

The DTF16 is a precision turbidimeter featuring an advanced, triple-beam scattered light optical design. It precisely measures light at a forward angle of (11°) and side angle of (90°) with simultaneous light compensation.

The DTF16 effectively measures a broad range of particles inline that contribute to turbidity and fine haze while providing the Nephelometric results required by most QA/QC guidelines. The combination of precise scattering light optics and optimized sensor body geometry prevents external or internal stray light from affecting the measurement.

Variable disturbances, such as sample color, color changes and lamp variations have no influence on the measured value.

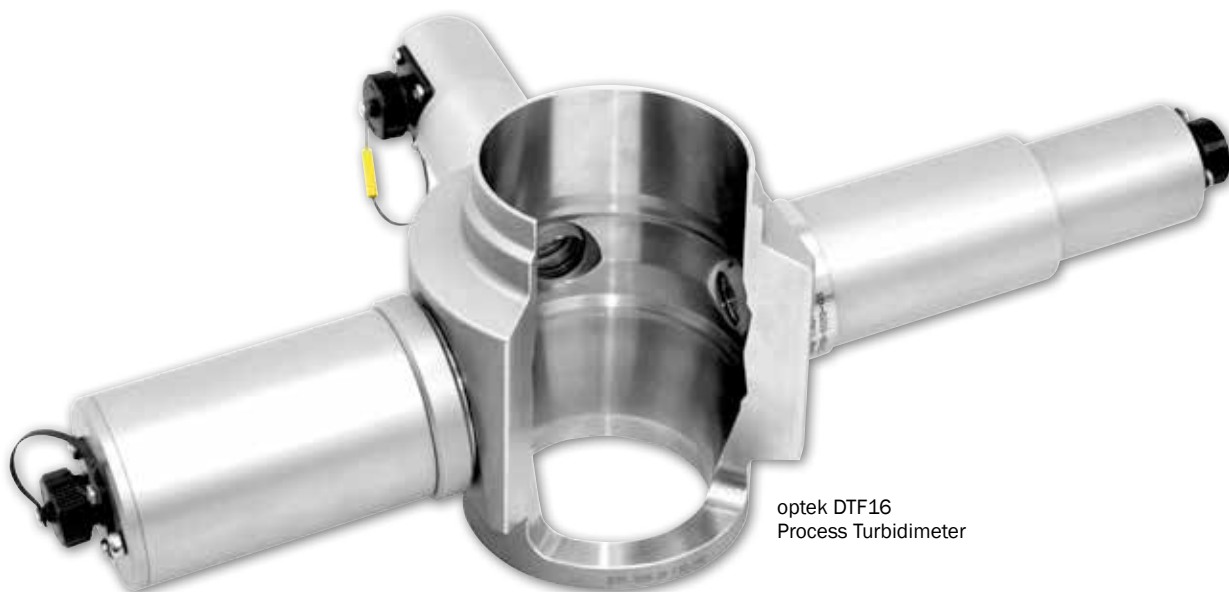
The sensor body is constructed of sanitary stainless steel. The DTF16 O-rings are made from FDA-approved EPDM. The optical windows are made from a single crystal sapphire providing superior resistance to abrasive and corrosive media. Armatures are available in nominal sizes of DN50 - DN125. Weld ends allow adaptation to any pipe/tube standard.

The DTF16 features a drift-free factory zero point, eliminating the need for calibration or zero adjustments.

Typical Applications:

- Filter control
- Filter break-through
- Filter backwash

See our various product and application brochures for further details



optek DTF16
Process Turbidimeter

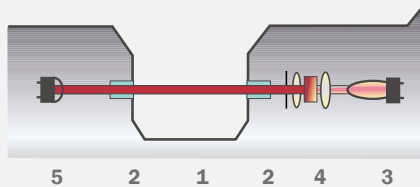


Turbidity Sensor DTF16 | 09

Technical Data	DTF16
Measurement	
Measurement principle	1- Channel Absorption of light and 2-Channel Scattering of light (11° and 90°)
Measurement wavelength	590 nm - 1100 nm
Detector(s)	1 silicon photodiode (hermetically sealed) (Abs.) 1 silicon photodiode (hermetically sealed) (90°) 8 silicon photodiodes (hermetically sealed) (11°)
Measuring range NIR-Absorption	any measuring range between 0 - 0.1 to 500 EBC 0 - 0.4 to 2,000 FTU
Measuring range Scattered Light (11°)	any measuring range between 0 - 0.1 to 25 EBC 0 - 0.4 to 100 FTU
Measuring range Scattered Light (90°)	any measuring range between 0 - 0.1 to 25 EBC 0 - 0.4 to 100 FTU / NTU
Optical path length	80 mm standard
Calibration	factory calibration (11° and 90°) 0 - 25 EBC / 0 - 100 FTU in standard sensor body (OPL = 80 mm)
Light source	special halogen lamp 5.0 V DC, 970 mA typical life span: 1.5 to 3 years (12,500 to 25,000 hours)
Resolution	< ± 0.05% of respective measuring range
Repeatability	< ± 0.3% of respective measuring range
Linearity	< ± 0.5% of respective measuring range (with standard solution, specific to application)
Protection	all optical parts have an IP rating of IP65 or higher
Sensor body	
Material	Stainless steel 1.4435 (SS 316L), Plastic TFM™ 4215, others on request
Line size	2 in. to 5 in. (DN 50 to DN 125), others on request
Process connection	butt weld tube ends: DIN 11850, ISO 1127, IPS (Schedule 5), OD (BS 4825-1), (e.g., Flange (DIN, ASME), Tri-Clamp) others on request
Process pressure	0 to 20 bar (0 to 280 psi)
Windows	3-Sapphire Biotech (type 3A)
Window gaskets	EPDM (FDA / USP Class VI), others on request
Temperature ratings	
Process temperature	permanent: 0 - 120 °C (32 - 248 °F) / peak 15 min/day: 0 - 150 °C (32 - 302 °F)
Ambient temperature	operation: 0 - 40 °C (32 - 104 °F) transport: -20 - 70 °C (-4 - 158 °F)

Pressure and temperature ratings specified herein may be subject to limitations - see instruction manual.
The appropriate choice of material for all wetted parts is the sole responsibility of the user.
Data given are subject to changes without prior notice.

10 | Probe Sensors AS16-N/AS16-F



Model AS16 Single Channel Absorption

- | | |
|-------------------|---------------------------------|
| 1 OPL | 2 Windows |
| 3 Lamp module | 4 Optics modules (incl. filter) |
| 5 Detector module | |

No window gaskets used

The AS16 series probes are high precision sensors measuring turbidity (AS16-N) or color (AS16-F) for use in various industries. The sensors are designed for inline operation and provide accurate concentration measurements with remarkable repeatability, linearity and resolution.

AS16

The AS16 series offers the high-end range of optek probe sensors. A wide selection of different optical path lengths and insertion depths combined with optional calibration filters and electro-polished stainless steel meet the requirements of the biotechnology and beverage industries.

NIR-Absorption (Turbidity) VIS-Absorption (Color)

A special tungsten lamp produces a constant light beam that passes through the process medium. The attenuation of the light intensity, caused by absorption and/or scattering by dissolved and undissolved substances, is detected by a sealed silicon photodiode. AS16-N uses light from 730 - 970 nm to measure solids concentration independent from color or color changes (e.g. yeast concentration in beer during tank transfer). AS16-F uses a specific wavelength in the visible spectrum to measure color in liquids with little or no turbidity (e.g. beer in water during phase change).

OPL

Special optical windows are made from a single crystal sapphire, providing superior resistance to all abrasive and corrosive media. optek's superior manufacturing techniques allow mounting the windows without gaskets or glue for a lifetime without maintenance. The appropriate choice of the optimal OPL (optical path length = distance between the windows) supports all measurement requirements, e.g., low/high measuring ranges at highest resolution.

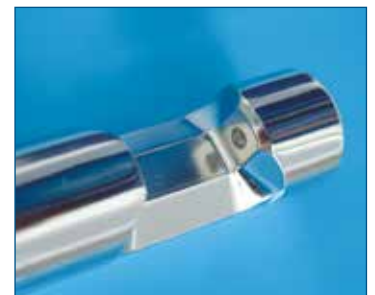
NIST-traceable

NIST-traceable calibration accessories (AS16 only) provide absolute measurement confidence (for details refer to our Control 4000 product information brochure).

Typical Applications:

- Filter feed monitoring (AS16-N)
- Beer/water phase separation (AS16-F)

See our various product and application brochures for further details



optek AS16-N Single Channel Absorption Probe

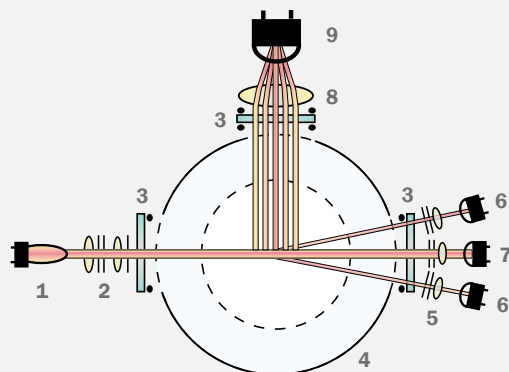


optek AS16-VB-N
Single Channel Absorption Probe with Calibration Option

Technical Data		AS16	
Measurement			
Measurement principle		1- Channel Absorption of light	
Detector		1 silicon photodiode (hermetically sealed)	
Measurement wavelength		<ul style="list-style-type: none">AS16-N: 730 - 970 nmAS16-F: 430, 550 or 620 nm	
Measuring range		AS16-N: any measuring range between 0 - 0.05 to 6 CU AS16-F: any measuring range between 0 - 0.05 to 2 CU (depending on wavelength)	
Optical path length		1, 5, 10, 20 or 40 mm	
Calibration		CU (concentration units) application specific calibration	
Light source		special incandescent tungsten lamp 5.0 V DC, 970 mA typical life span: 3 to 5 years (25,000 to 40,000 hours)	
Resolution		< ± 0.05% of respective measuring range	
Repeatability		< ± 0.5% of respective measuring range	
Linearity		< ± 1% of respective measuring range (specific to application)	
Protection		all optical parts have an IP rating of IP65 or higher	
Process adaption			
Material		wetted parts: stainless steel 1.4435 (SS 316L) dF < 1%, BN2 surface: N5: Ra < 0.4 µm (16 µinch) – electropolished housing: stainless steel 1.4571 (SS 316 Ti)	
Port connection		thread G1-1/4 in., ISO 228/1 for port AS25 (similar Ingold-port) diameter: 25 mm (D = 25 H7) O-ring groove for 30 mm and for 60 mm port length	
Port gasket		O-ring 18.64 x 3.53 mm EPDM (FDA / USP Class VI)	
Insertion depth		35 mm (1.38 in.) + OPL at a port length of 60 mm (2.36 in.)	
		135 mm (5.31 in.) + OPL at a port length of 60 mm (2.36 in.)	
Process pressure		0 to 20 bar (0 to 290 psi)	
Windows		sapphire (seal-less)	
Window gaskets		n/a	
Installation accessories		weld-in ports, Varivent adapter (50.00), clamp adapter (1.5 and 2.0 in.)	
Temperature ratings			
Process temperature		permanent: 0 - 100 °C (32 - 212 °F) peak 60 min/day: 0 - 150 °C (32 - 302 °F) peak 90 min/day: 0 - 130 °C (32 - 266 °F)	
Ambient temperature		operation: 0 - 40 °C (32 - 104 °F) transport: -20 - 70 °C (-4 - 158 °F)	
Calibration			
Calibration adapter		none	
Calibration adapter OPTION VB		Filter adapter FH03 for calibration filter used for sensor verification	

Pressure and temperature ratings specified herein may be subject to limitations - see instruction manual.
 The appropriate choice of material for all wetted parts is the sole responsibility of the user.
 Data given are subject to changes without prior notice.

12 | Laboratory Turbidimeter DT9011*



Model DT9011 Dual Channel Scattered Light (11° and 90°)

- 1 Lamp module
- 2 Optics module
- 3 Windows
- 4 Sample chamber with bath turntable
- 5 Focusing optics
- 6 Eight 11° detectors
- 7 Detector 0° (Abs.)
- 8 Optics module 90°
- 9 Detector 90°

DT9011 Haze Control Laboratory Turbidimeter

The optek DT9011 is a precise, laboratory-quality turbidimeter. The DT9011 features an advanced, triple beam scattered light optical design, measuring forward scatter (11°), side scatter (90°), and direct (0°) light.

The DT9011 effectively measures a broad range of constituents that contribute to turbidity and fine haze in consumer products such as beer.

The powerful, easy to use DT9011 software allows the storage of data for up to 32 different products. This data includes product parameters, measuring ranges, bottle types and more.

The integrated data logger records all measurements and parameters. The data logger can store up to 25,000 data sets. The data tables can be displayed directly on the DT9011 or transferred to a PC using the optional PC-Transfer Software.

The sample is submerged in a water bath and sampled 250 times in one rotation resulting in advanced data analysis. Using this method, the effects of bottle color and shape, as well as scratches, seams and other imperfections will have no influence on the measurement. The circulating water bath and a drift-free, factory zero point ensure sensitivity and repeatable measurements.

Typical Industries:

- Breweries
- Distilleries
- Wineries
- Soft Drinks
- Juice Processors
- Bottled Water
- Malt Beverages

See our various product and application brochures for further details

Dimensions	
Cuvettes	diameter: Ø 58.0 - 72.5 mm (2.28 - 2.85 in.) wall thickness: minimum 2 mm (0.08 in.) height: 140 - 280 mm (5.5 - 11.0 in.)
Bottles	diameter: Ø 58.0 - 72.5 mm (2.28 - 2.85 in.) height: 140 - 280 mm (5.5 - 11.0 in.) color: green, brown, clear
Bottle insert	adapter Ø 61 mm (2.40 in.): bottles Ø 58.0 - 60.5 mm (2.28 - 2.38 in.) adapter Ø 64 mm (2.52 in.): bottles Ø 60.5 - 63.5 mm (2.38 - 2.50 in.) adapter Ø 67 mm (2.64 in.): bottles Ø 63.5 - 66.5 mm (2.50 - 2.62 in.) adapter Ø 70 mm (2.76 in.): bottles Ø 66.5 - 69.5 mm (2.62 - 2.74 in.) without adapter: bottles Ø 69.5 - 72.5 mm (2.74 - 2.85 in.)

Data given are subject to changes without prior notice.



DT9011 * Only for sale outside the EU

Technical Data		DT9011*	
Measurement			
Measurement principle	2-Channel Scattering of light (11 ° and 90 °)		
Measurement wavelength	590 nm - 1100 nm		
Detectors	1 silicon photodiode (hermetically sealed) (Abs.) 1 silicon photodiode (hermetically sealed) (90 °) 8 silicon photodiodes (hermetically sealed) (11 °)		
Measuring range	Bottles: any measuring range between 0 - 1 to 25 EBC (11 ° and 90 °) 0 - 4 to 100 FTU (11 °) 0 - 4 to 100 FTU / NTU (90 °)	Cuvettes: any measuring range between 0 - 1 to 100 EBC (11 ° and 90 °) 0 - 4 to 400 FTU (11 °) 0 - 4 to 400 FTU / NTU (90 °)	
Calibration	factory calibration (11 ° and 90 °) user calibration possible, at any time reversible to factory calibration comparison between factory settings and user settings possible		
Light source	special halogen lamp 5.0 V DC, 970 mA typical life span: 1.5 to 3 years (12,500 to 25,000 hours)		
Resolution	0 - 1 EBC to 0 - 4 FTU: < ± 1% of respective measuring range 0 - 100 EBC or 0 - 400 FTU: < ± 0.05% of respective measuring range		
Repeatability	< ± 1.0% in cuvette		
Linearity	< ± 1.0% in cuvette		
Protection	table case front IP40		
System			
Material	housing: stainless steel 1.4301 (SS304) dimensions: W 381 mm (15 in.), H 394 mm (15.5 in.), D 445 mm (17.5 in.) measurement chamber: POM C tubing: PA, PVC fittings: stainles steel, brass		
Water bath	overflow drain valve (flow regulation) sensor for minimum water level volume: 600 ml (20 fl oz) flow: 5 to 15 l/h with circulation		
Rotation system	standard		
Display	LCD graphic display black on white (240 x 128 pixel), LED background illuminated		
Operation	18-button keyboard		
System clock	accuracy approx. 1 minute/month (battery life approx. 15 years)		
LED	1 LED (green): power on 1 LED (red-flashing): system failure / lamp failure 2 LED's (yellow): alarm I, II		
Serial communication	RS232 bidirectional interface on the back (with software package optek PC-transfer) up - and download of configuration, download of data logger content		
Power supply	115 / 230 V AC, selectable (93.5 - 132 / 187 - 264 V AC, 47 - 64 Hz) consider an external release device power consumption: < 50 VA		
Windows	borosilicate glass		
Gaskets	buna, Viton®		
Temperature ratings			
Water bath temperature	10 ° C to 40 °C (50 ° F to 104 °F)		
Ambient temperature	operation: 0 - 40 °C (32 - 104 °F) transport: -20 - 70 °C (-4 - 158 °F)		

Data given are subject to changes without prior notice.

* Only for sale outside the EU

14 | Applications

- **Inline**
- **Real-Time**
- **Precise**
- **Process Monitoring**

Filter Control 11° / 90°

The optek Haze Control / DTF16 relies on a dual angle scattered-light measurement for precise quality control during final filtration independent of color and color changes. Using this sensor downstream of the filter detects filter breakthroughs, preventing “out of spec” product while ensuring product quality and clarity at each filtration step.

Feed Monitoring

Using an optek AS16-N or AF16-N, the turbidity in the feed line can be monitored, allowing precise feed control while preventing filter clogging or blinding. This additional sensor can be connected to your Haze Control / DTF16 system without the need for an additional converter.

Filter Backwash Optimization

The optek AS16-N or AF16-N used for feed monitoring can also be used to optimize your filter backwash process by measuring the turbidity in the water, saving time, energy and conserving water usage.

Filter Aid Dosage

Dosage of filter aids like Kieselguhr or PVPP can be controlled with optek absorption or scattered-light sensors. Optimizing filter aid usage reduces costs and at the same time ensures consistent product quality.

Interface Detection

The Haze Control / DTF16 system may also be paired with an AS16-F or AF16-F to measure the color of your beer. This measurement controls the phase separation between beer and water ensuring faster product change-overs while maintaining product quality and minimizing product losses.

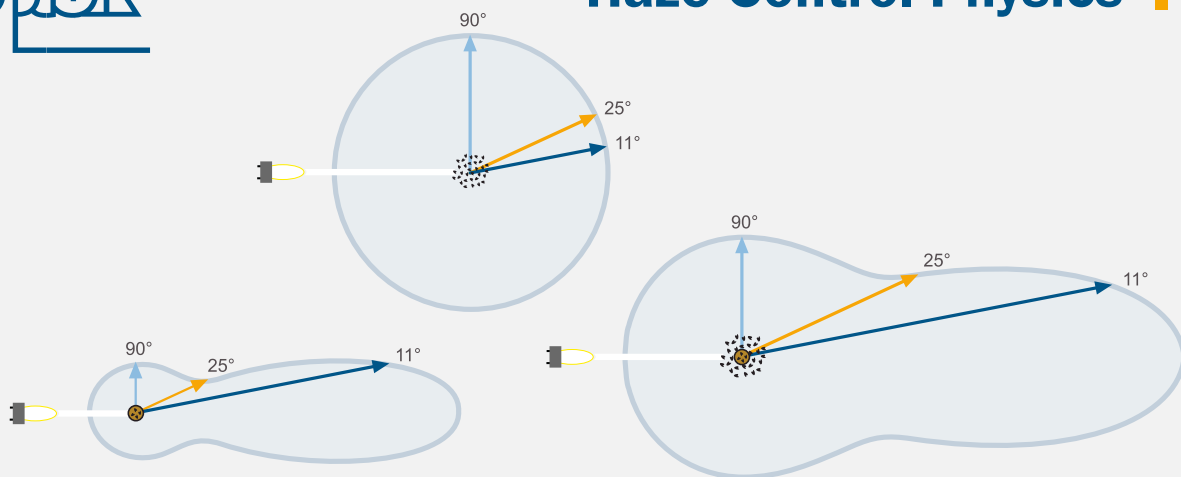
Filter Setup Monitor

Using the 0° absorption channel of the sensor DTF16, turbidity up to 500 EBC can be measured, allowing you to monitor and control the filter pre-coat cycle. This provides an additional opportunity for filter optimization.



optek Haze Control DTF16 System





Why use an 11° measurement?

Forward scattered light is particle size sensitive and its strengths are efficiently detecting filter breaks, filtrate turbidity and detecting particles such as yeast, trub and Kieselguhr, even at extremely low concentrations.

11° measurements are very sensitive in this regard and correlate well to actual non-dissolved solids content, essential for proper filtration control and optimization.

Why is 11° better than the 25° measurement?

Scattered light at 11° is more specific due to a higher signal and will detect abnormal particulate faster without the influence from colloidal material common at 25°. This also aids in the prompt identification of filtration problems.

Why use a 90° measurement?

Turbidity measurements at an angle of 90° are highly sensitive to colloids and are used as a quality check for the clarity of the beer. Mistakenly, 90° techniques have been used for process evaluation and filter control but do not correlate to

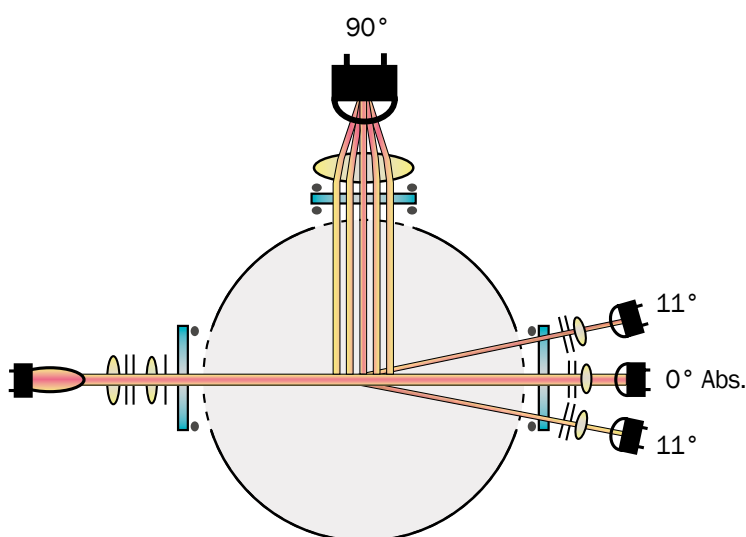
actual non-dissolved solids content. Modern breweries can now measure this parameter inline and thus automate the release of beer.

Why use a 0° absorption measurement?

Using the 0° absorption channel allows measurements at higher turbidity levels, well beyond the range of the 11° or 90° results, allowing monitoring and control of the filter pre-coat cycle as well. This provides an additional opportunity for filter optimization.

Why is the reading of lab and process sometimes different?

The beer in the pipe is homogeneous, under pressure, and at a constant temperature. In the lab, the samples have time to change, solids may precipitate, and temperature changes will affect the solubility of colloids and with that the measurement. In addition, differences in the optical configurations of the instruments themselves, along with the calibration methods used, have an influence on comparative results.





Germany

optek-Danulat GmbH
Emscherbruchallee 2
45356 Essen / Germany
Phone: +49 201 63409 0
E-Mail: info@optek.de



USA

optek-Danulat Inc.
N118 W18748 Bunsen Drive
Germantown WI 53022 / USA
Phone: +1 262 437 3600
Toll free call: +1 800 371 4288
E-Mail: info@optek.com



Singapore

optek-Danulat Pte. Ltd.
25 Int'l Business Park
#02-09 German Centre
Singapore 609916
Phone: +65 6562 8292
E-Mail: info@optek.com.sg



China

optek-Danulat Shanghai Co., Ltd.
Room 718 Building 1
No.88 Keyuan Road
Pudong Zhangjiang
Shanghai, China 201203
Phone: +86 21 2898 6326
E-Mail: info@optek-danulat.com.cn

中国

优培德在线测量设备（上海）
有限公司
上海张江科苑路88
号德国中心718
室 邮编:201203
电话: +86-21-28986326
E-Mail: info@optek-danulat.com.cn

Please visit our website for contact details of our local distributors in other countries.
www.optek.com