

# HOSPITALITY

THE HOSPITALITY STUDIO AT BAR ARCHITECTS & INTERIORS









# HOSPITALITY

THE HOSPITALITY STUDIO AT BAR ARCHITECTS & INTERIORS

BAR ARCHITECTS & INTERIORS specializes in designing unique places for people to experience and enjoy. Location and context is celebrated and serves as the basis for creating relevant and memorable environments that reflect the unique lifestyle, aspiration and values of our clients and their guests. Using an inclusive and collaborative process, we strive to bring beauty and delight by blending the power of architecture and interior design with art and function to inspire. Our firm's commissions include hotels, destination resorts, spas, restaurants, wineries and a variety of entertainment venues. Let's be inspired together!





## FLAMINGO RESORT

*Built in 1957, the Flamingo is rooted in mid-century history and architecture. The interior design and story transports guests back to the hotel's roots, but with a contemporary twist of period detailing, furnishings and finishes.*

















## KISSEL HOTEL & MONOGRAM AT KISSEL

*This unique mixed-use hotel and multifamily housing complex boasts a stunning lounge, café, and rooftop bar that has become an extension of the neighborhood.*

*Glass, metal, and brick serve as the contemporary palette of the historic industrial character reflecting Broadway Auto Row.*





















# THE FOUNTAINGROVE GOLF CLUBHOUSE

*Rebuilt embracing the paradox of building a strong and vibrant community after the devastation wrought by the fires of 2017. Intended to feel as a second home, the design also provides a flexible work place for members and guests.*













## OJAI VALLEY INN\*

*This historic resort is nestled in a rare Southern California coastal valley and links the Mountain, Valley and Legacy, while celebrating the connection of the indigenous Chumash Native American people and distinct California-style architecture.*







*\*EDG Interior Architecture and Design project completed by Tim Hepworth as Studio Design Director while with EDG.*











## OJAI VALLEY INN – SPA PENTHOUSES

*Generous living spaces warmed by feature fireplaces and private patios.  
With a palette of custom-made furniture, unique art and thoughtful  
accessories, the suites embody luxury and exclusivity.*

















## OJAI VALLEY INN – HACIENDA SUITE

*A contemporary, subdued and elegant palette is reflective of the owners' tastes, making it their favorite suite on the property.*









## OJAI VALLEY INN – WALLACE NEFF ESTATE GUESTROOMS

*The historic Wallace Neff guestroom building acts as a boutique hotel within the Ojai Valley Inn. Guestrooms draw on its unique period while offering modern conveniences.*









# YOTEL

*Bringing innovation to the heart of San Francisco by recreating this 1905 historic landmark into a hip hotel that plays a key role in the revitalization of the mid-market area.*









# EL CAPITAN HOTEL

*Conceived as a modern interpretation of the Art Deco style, the historic hotel's renovation retains a 1930's-era romance while integrating modern spaces designed for 21st Century activities.*









## PINNACLES ON TELO

*Located on an uninhabited fifty-acre island in Indonesia, this destination boutique resort with bespoke bungalows, main lodge, marine facility and hydroponic garden provides an idyllic setting for water-oriented sports, relaxation and a connection to the land and ocean.*

















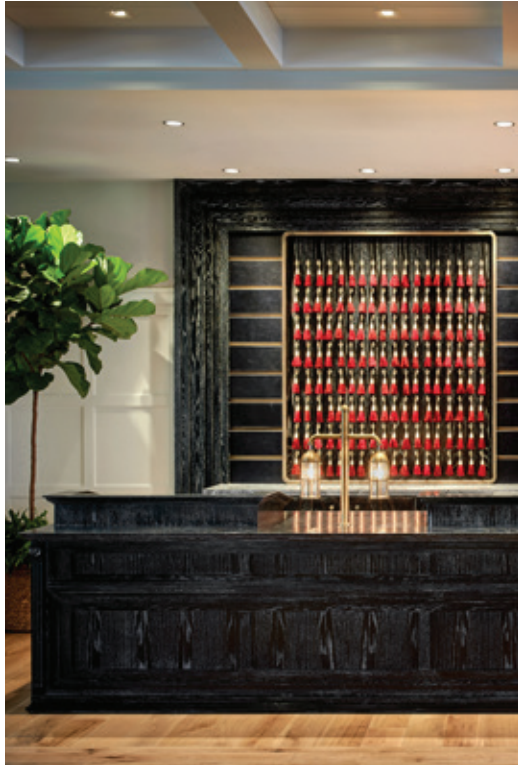
## LIDO HOUSE\*

*Lido House is inspired by East Coast architectural design mixed with the relaxed indoor/outdoor living of southern California. Design elements are influenced by traditional nautical elements, watery palette of the coastline and garden colors of the East Coast. This mixing of elements creates interest and deeper connection to Newport Beach.*



\*EDG Interior Architecture and Design project completed by Tim Hepworth as Studio Design Director while with EDG.







## BOULDERS RESIDENCES

*A reinterpretation of traditional Western Sierra snow-country design creates contemporary architecture with historical form and materials, offering year-round hospitality for individualized work, play or relaxation.*





















## LAW WINERY

*The winery welcomes visitors with a modern, yet intimate facility that feels residential and showcases the family's passion for creating world class wines with attention focused to each step of the production process.*













# THE MADISON CLUB

*A modern interpretation of California's classic country club and Hollywood glamour, the timeless design offers an intimate, yet casually elegant setting that encourages the many celebrity members to feel at ease and relax.*









# TRINCHERO WINERY

*Designed as an enduring symbol of the family's nearly 70 years in the Napa Valley, the winery and hospitality center represent the commitment of three generations to crafting wine of the utmost quality.*

















NEWLY CONSTRUCTED / IN PROCESS

THE LINE HOTEL – SAN FRANCISCO, CA



SONOMA RESIDENCE – HEALDSBURG, CA





RESIDENCE F AT MONTAGE HEALDSBURG – HEALDSBURG, CA



TALUS RESORT VILLAS AND CLUBHOUSE – LA QUINTA, CA





NEWLY CONSTRUCTED / IN PROCESS

THE COVE – ELEUTHERA, BAHAMAS



DSRT SURF RESORT – PALM DESERT, CA





# CREDITS

## **FLAMINGO RESORT – SANTA ROSA, CA**

Boutique mid-century resort and spa with 170 guestrooms, ballroom, restaurants, pool area and bar.

BAR Architects & Interiors: Interior Design

## **KISSEL HOTEL & MONOGRAM AT KISSEL – OAKLAND, CA**

168-key hotel, 72 residences, restaurant and rooftop bar.

BAR Architects & Interiors: Architecture and Planning;

Additional Photography: Stephanie Russo

## **THE FOUNTAINGROVE GOLF CLUBHOUSE – SANTA ROSA, CA**

20,500 sf clubhouse with dining, commercial display kitchen, lounge, meeting rooms, offices and pro shop.

BAR Architects & Interiors: Architecture, Planning and Interior Design

## **OJAI VALLEY INN\* – OJAI, CA**

Luxury golf resort with 420 guestrooms, suites, restaurants and luxury spa.

*\*EDG Interior Architecture + Design project completed by Tim Hepworth as Studio Design Director while with EDG.*

## **OJAI VALLEY INN SPA PENTHOUSES – OJAI, CA**

Four prestigious suites atop the inn's world-class spa.

BAR Architects & Interiors: Interior Design

## **OJAI VALLEY INN HACIENDA SUITE – OJAI, CA**

1,800 sf presidential suite.

BAR Architects & Interiors: Interior Design

## **OJAI VALLEY INN WALLACE NEFF ESTATE GUESTROOMS – OJAI, CA**

Guestrooms in historic boutique hotel sited on property.

BAR Architects & Interiors: Interior Design

## **YOTEL – SAN FRANCISCO, CA**

Adaptive reuse of historic landmark hotel with 203 “capsule” micro-guestrooms.

BAR Architects & Interiors: Architecture, Interior Architecture, and Interior Design of Guestrooms; Nicole Hollis: Interior Design of VIP Suite and Public Areas

## **EL CAPITAN HOTEL – MERCED, CA**

Boutique hotel with indoor/outdoor dining, lounges and conference facilities.

BAR Architects & Interiors: Architecture and Planning; Nicole Hollis: Interior Design

## **PINNACLES ON TELO – INDONESIA**

Boutique destination resort with eight bespoke bungalows, main lodge, pool and spa.

BAR Architects & Interiors: Design Architect

## **LIDO HOUSE\* – NEWPORT BEACH, CA**

Autograph collection hotel with 140 guestrooms, suites, restaurant & luxury spa.

*\*EDG Interior Architecture + Design project completed by Tim Hepworth as Studio Design Director while with EDG.*

## **BOULDERS RESIDENCES – NORTHSTAR LAKE TAHOE, CA**

19 ski-in-ski-out 3-4 bedroom/4-5 bath townhouse units with open kitchen/great room, den/media room, balcony with hot tub and attached 2-car garage.

BAR Architects & Interiors: Architecture and Planning

## **LAW WINERY – PASO ROBLES, CA**

10,000 case production winery and by-appointment tasting room with wine library and event spaces.

BAR Architects & Interiors: Architecture and Interior Architecture; Hirsch Bedner Associates: Interior Design

## **THE MADISON CLUB – LA QUINTA, CA**

Flagship clubhouse with spa, fitness, dining, five en-suite residences, and associated villas.

BAR Architects & Interiors: Architecture and Interior Architecture; BraytonHughes Design Studios: Interior Design

## **TRINCHERO WINERY – ST. HELENA, CA**

Legacy winery with 50,000 case production facility, hospitality center and public tasting room.

BAR Architects & Interiors: Architecture, Planning and Interior Architecture; Erin Martin Design: Interior Design



**BAR** architects  
& interiors

San Francisco • 415 293 5700

Los Angeles • 213 349 0180

[bararch.com](http://bararch.com)

